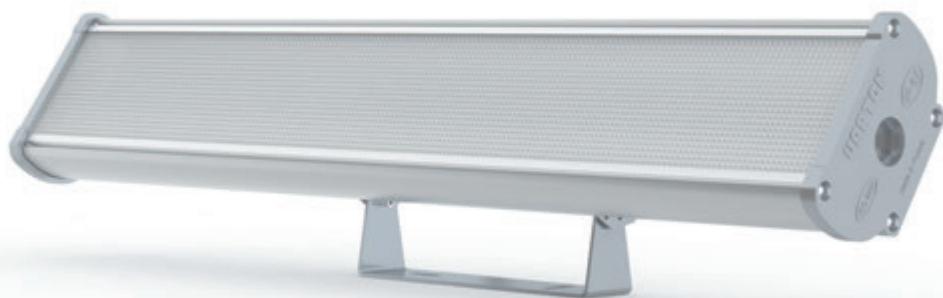


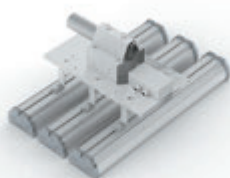
Mounts for LED luminaires of the Iron, Iron 2.0 and Iron Lens series.



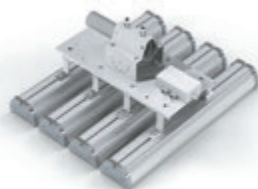
V4-IO-70.0087.IRO-0001
Swivel mount (180 ° angle) for Iron luminaires Iron
192×45×80mm



Case: Galvanized steel
Mounting: Conveniently connecting luminaires using WAGO terminals in wiring boxes
Swivel mount is mounted on a flat surface of the ceiling or wall.
Angle of rotation 180 °, in increments of 15 °.
Allows you to adjust the angle of illumination of lamps in the premises of storage areas, industrial plants or in the open air
Installation on console with diameter from 40 mm to 50 mm



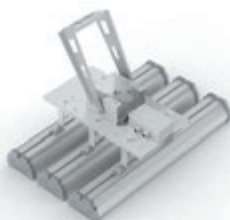
V4-IO-70.0003.IRO-0001
Console for 3 pcs. lamps 325×120×300mm



V4-IO-70.0003.IRO-0002
Console for 4 pcs. lamps 450×120×300mm



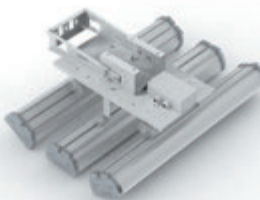
V4-IO-70.0003.IRO-0004
Suspension mount on eye-nuts, a set of two pieces



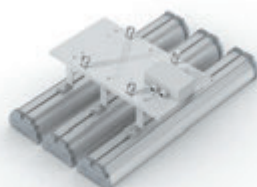
V4-IO-70.0002.IRO-0002
Swivel mount for 3 pcs. lamps 325×276×300mm



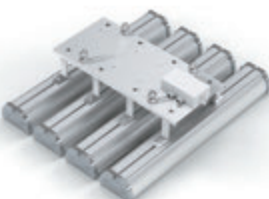
V4-IO-70.0002.IRO-0003
Swivel mount for 4 pcs. lamps 450×276×300mm



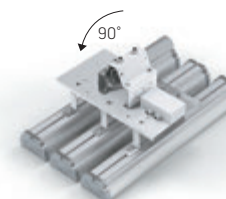
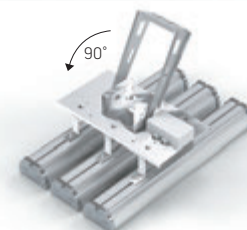
Installation of a single mount on a group mount to adjust the angle of the lamp



V4-IO-70.0004.IRO-0001
Swivel mount for 3 pcs. lamps 325×120×300mm



V4-IO-70.0003.IRO-0003
Swivel mount for 4 pcs. lamps 450×120×300mm



The possibility of turning the swivel and console mounts 90 ° for easy installation

